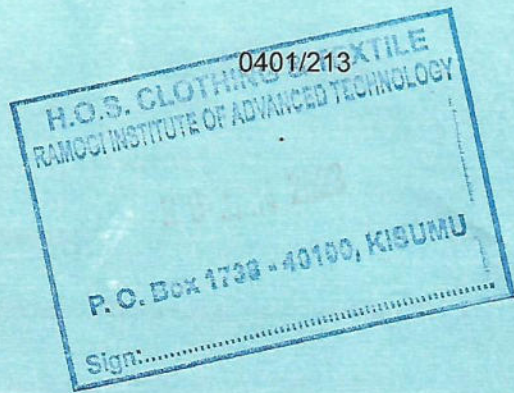


0401/213  
**TRADE THEORY**  
 Oct./ Nov. 2022  
 Time: 2½ hours



**THE KENYA NATIONAL EXAMINATIONS COUNCIL**  
**ARTISAN CERTIFICATE IN GARMENT MAKING**

**TRADE THEORY**

**2½ hours**

**INSTRUCTIONS TO CANDIDATES**

*This paper has TWO sections; A and B.*

*Answer ALL the questions in section A and any FOUR questions from section B in the answer booklet provided.*

*Maximum marks for each part of a question are as indicated.*

*Candidates should answer the questions in English.*

**This paper consists of 4 printed pages.**



**Candidates should check the question paper to ensure that all the pages are printed as indicated and that no questions are missing.**



**SECTION A (40 marks)**

*Answer ALL the questions in this section.*

1. Name **four** tools used in garment making. (2 marks)
2. List **four** measurements taken for drafting a short trouser. (2 marks)
3. State **four** factors to consider when choosing fabric for a garment. (4 marks)
4. Name **four** fasteners that are applied on dresses. (2 marks)
5. List **four** instructions contained on final patterns. (2 marks)
6. Name **two** decorative hand stitches. (2 marks)
7. Match the following items appropriately: (2 marks)

Method of disposing fullness	Wear protective clothing
Pattern detail	Raglan
Workshop rules	Dart
Type of sleeve	Fitting

8. State **four** factors to consider when costing a garment. (4 marks)
9. List **four** finishing processes done on garments during sewing. (4 marks)
10. State **four** safety measures to observe while in a garment making workshop. (4 marks)
11. State **two** advantages of using fusible interfacing. (2 marks)
12. Name **four** equipment used during pressing. (2 marks)
13. Identify **four** self-neatening seams. (2 marks)
14. State **four** causes of skipped stitches during machine stitching. (2 marks)
15. State **four** measures of caring for a sewing machine. (2 marks)
16. Outline **two** reasons that can lead a customer to reject a tailored garment. (2 marks)



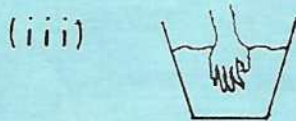


**SECTION B (60 marks)**

*Answer any FOUR questions from this section.*

17. (a) Name **four** parts of a sewing machine that are threaded before stitching. (4 marks)
- (b) List the **three** classes of textile fibres. (3 marks)
- (c) Outline **four** disadvantages of each of the following types of fabrics:
- (i) woollen; (4 marks)
- (ii) cotton. (4 marks)

18. (a) Highlight **four** skills that a garment maker should possess. (4 marks)
- (b) Identify the following laundry symbols: (8 marks)



- (c) State **three** reasons for cutting fabrics along the cross grain. (3 marks)

19. Sketch the front view of a blouse to show the following details:

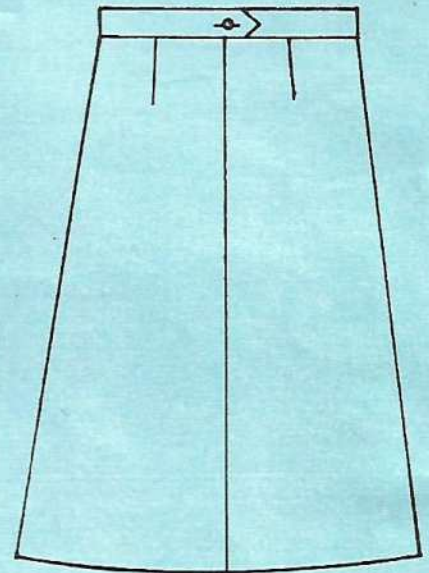
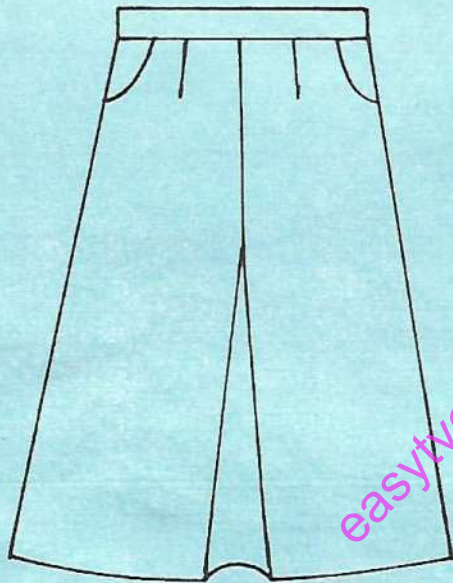
- (i) sweet-heart neckline;
- (ii) underarm dart;
- (iii) fitted waist;
- (iv) puff sleeves;
- (v) buttoned front.

(15 marks)





20. (a) Identify **three** types of pockets. (3 marks)
- (b) Name **four** methods of neatening the raw edges of a plain seam. (4 marks)
- (c) With the aid of diagrams, distinguish between the following:
- (i) Peter pan collar and sailor's collar; (4 marks)
- (ii) Kimono sleeve and Raglan sleeve. (4 marks)
21. (a) Draw and name the pattern pieces for the skirt style sketched below. (10 marks)



- (b) Identify **five** contents of a First Aid Kit. (5 marks)

**THIS IS THE LAST PRINTED PAGE.**

